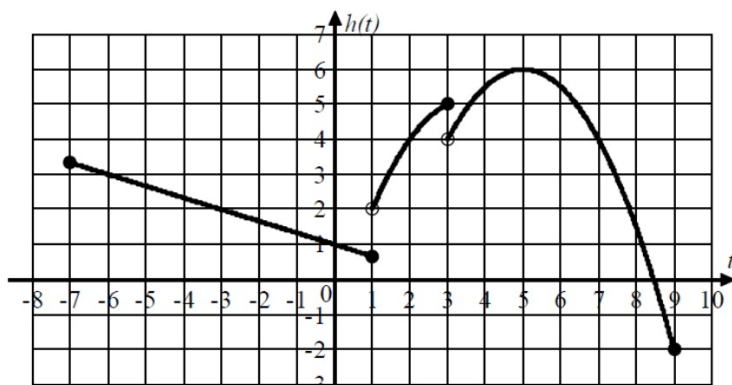


Use the graph of the piecewise function, $h(t)$, and the table to answer the following questions. The point $(3, 5)$ is not the vertex of a parabola, but the point $(5, 6)$ is the vertex of a parabola.



t	$h(t)$
-6	3
-3	2
2	4
3	5
5	6
7	4
9	-2

- What is the value of t where $h(t) = 4$?
- What is the value of $h(3)$?
- What are the coordinates of the point where $h(t)$ has an absolute maximum value?
- On what intervals is $h(t)$
 - increasing?
 - decreasing?
- What is the domain?
 - What is the range?
 - At what values of t is h discontinuous?